

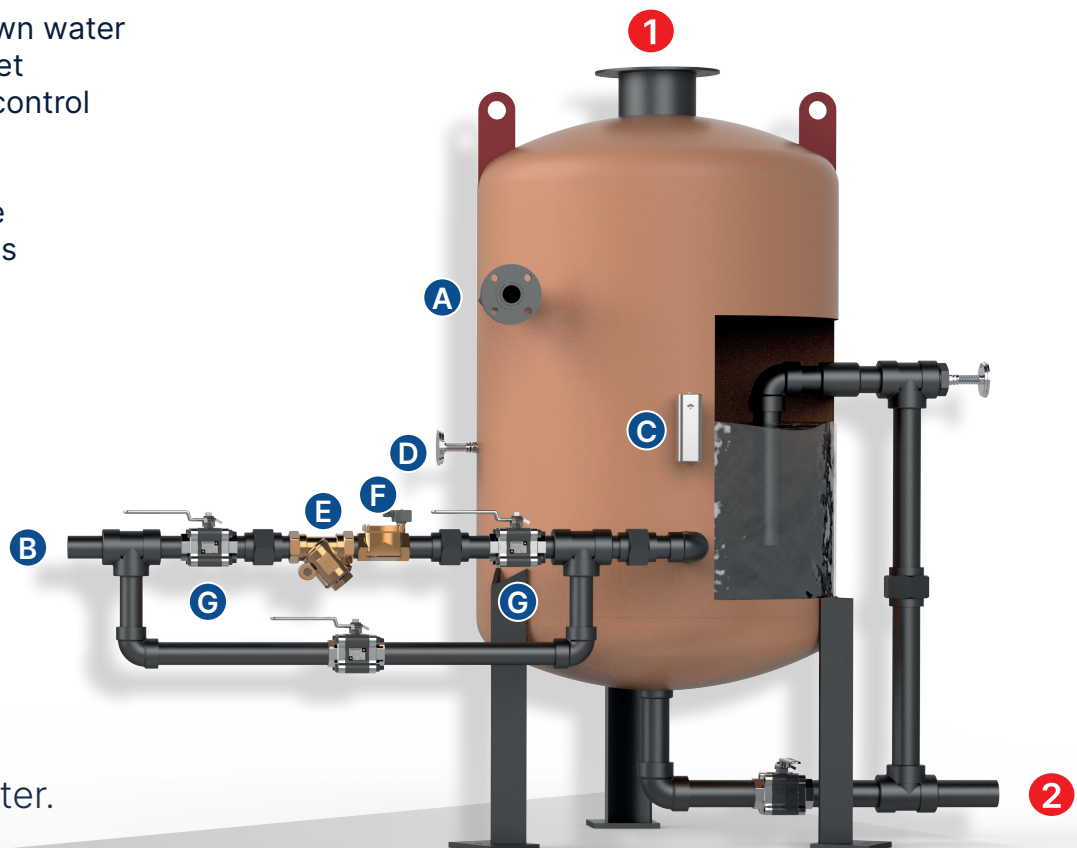
Powermaster®

Blowdown Separator TPG-200

- Safe and efficient method for separating flash steam and high-temperature water during boiler blowdown.
- Protects internal boiler surfaces by preventing scale buildup and corrosion caused by dissolved solids.
- The most equipped version guarantees reduced discharge water temperature to meet environmental regulations and requirements.
- Tangential inlet induces cyclonic flow, facilitating steam-water separation.
- Quick installation with few connections and easy integration into existing systems.

This image shows the most equipped version, corresponding to TPG-ENF.

- A Boiler blowdown water
- B Cold water inlet
- C Temperature control
- D Thermometer
- E Y-Strainer
- F Solenoid valve
- G 3-valve bypass



- 1 Vent.
- 2 Residual water.

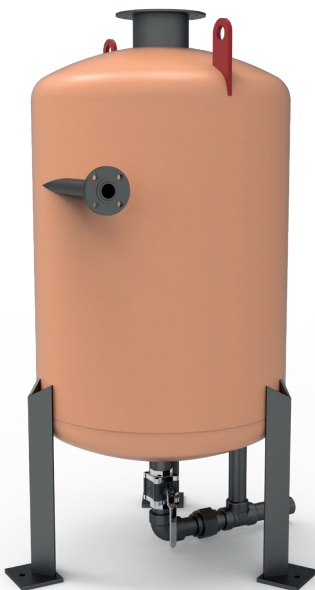
TECHNICAL SHEET:

model TPG-200

Aftercooler accessories

	TPG-200	TPG-200-ENF
BALL VALVE 300 PSI	-	●
Y-STRAINER	-	●
3-VALVE BALL BYPASS	-	●
2 THERMOMETERS	-	●
TEMPERATURE CONTROL	-	●
SOLENOID VALVE	-	●

TPG-200



TPG-200-ENF

