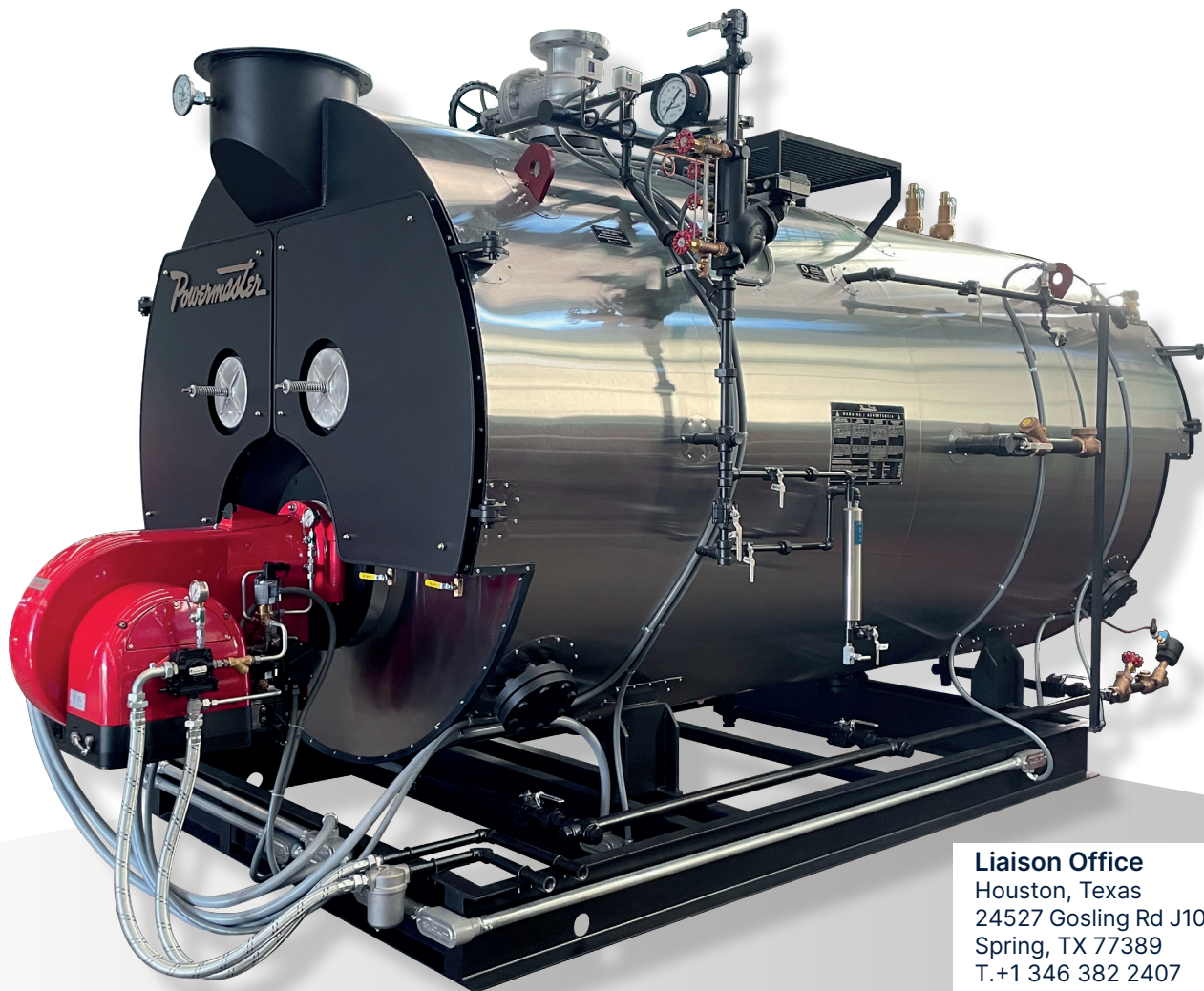


Powermaster®

Wet-Back Steam Boiler

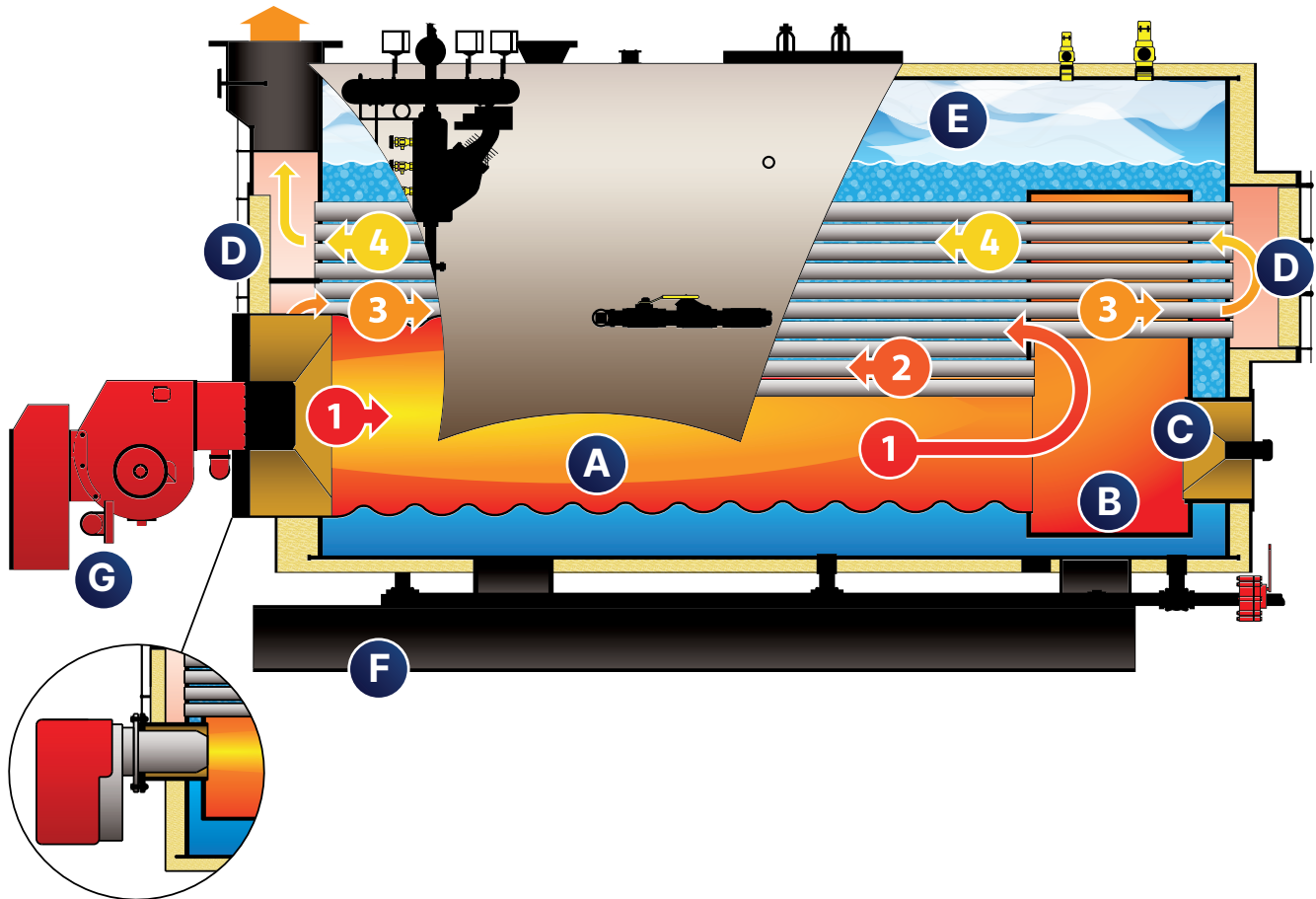
Series WB-A2-4P

- Capacities: 80 to 1000 BHP High & Low Pressure.
- Dry saturated steam.
- Fuels: Diesel, LPG, Nat gas or Heavy Oil.
- Highest guaranteed efficiencies.
- Cutting edge technology.
- Four pass Wet-Back firetube packaged boiler.
- Designed and manufactured as per ASME Section I or IV.
- Automatic operation.
- Integrated control panel.
- Hot corrugated furnace chamber with low fatigue coefficient.
- Wet-Back (water submerged smoke reversal chamber).
- Hinged/removable front doors and hinged back doors.
- Gas side back pressure openings
- Structural steel base
- No refractory in doors.



Liaison Office
Houston, Texas
24527 Gosling Rd J101,
Spring, TX 77389
T.+1 346 382 2407

CHARACTERISTICS: series WB-A2-4P



Optional Wet-front

- A Corrugated furnace chamber.
- B Wet-Back.
- C Manhole access.
- D No refractory in doors.
- E Ample steam dome.
- F Structural steel base.
- G Weishaupt, Riello, Webster, Johnson or Powerflame burner.

- 1 First pass.
- 2 Second pass.
- 3 Third pass.
- 4 Fourth pass.